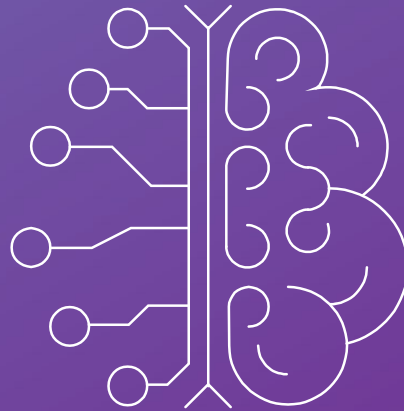


Infosys NIA

MACHINE LEARNING

Installation Guide

Limited Version for GovHack Event



Notices

Copyright

Copyright 2017-2020 Infosys Ltd. All rights reserved.

Information in this document is furnished only under a Customer License Agreement or non-disclosure agreement and may be used or copied only in accordance with the terms of either such agreement. The software described in this document is owned by Infosys Ltd. and protected by U.S. copyright law and may not be copied on any medium except as specifically authorized in the Customer License Agreement or non-disclosure agreement.

Disclaimer

Infosys Ltd. reserves the right to revise this document and to make changes from time to time without any obligation of any kind to notify any person of such revisions or changes.

Trademarks

Infosys® and Infosys Nia™ are trademarks or registered trademarks of Infosys Ltd.. SKYTREE®, the Skytree logo, THE MACHINE LEARNING COMPANY®, THE DATA DRIVEN ENTERPRISE™, Skytree™, AutoModel™, and AutoDocumentation™ are trademarks or registered trademarks of Skytree, Inc.. ORACLE®, JAVA®, and JDK™ are trademarks or registered trademarks of Oracle and/or its affiliates. HADOOP®, HIVE™, PIG™, HBASE™, SPARK™, TOMCAT™, and ZOOKEEPER™ are trademarks or registered trademarks of the Apache Software Foundation.

MAPR® is a registered trademark of MapR Technologies, Inc. Python™ is a trademark of the Python Software Foundation. Third-party product names and related marks used in this document are trademarks or registered trademarks of their respective owners. Use of third-party product names and marks does not imply any affiliation or endorsement by such parties.

Revision Date: _____

Support

Global Support	Information
By E-mail	nia.productsupport@edgeverve.com
By Phone	NIA Support # 1: +919373159982. NIA Support # 2: +919513729742
By Web	https://aejsdk.evoncloud.com/servicedesk/customer/portal/14
By Mail	EdgeVerve Systems Limited Equinox, Plot No. 47, Sy. No. 10, Electronics City, Hosur Road, Bengaluru - 560 100 India Phone: +91 80 3952 2222 Fax: +91 80 2852 1300

Introduction to Nia

Welcome to Nia. Infosys Nia is an Artificial Intelligence platform which collects and aggregates organizational data from people, processes and legacy systems into a self-learning knowledge base and then automates repetitive business and IT processes, freeing up human effort to solve higher-value customer problems that require creativity, passion, and imagination.

Infosys Nia expands the scope of the first generation AI platform beyond Information Technology simplification and optimization; and allows our clients to leverage AI to drive transformations in their core business. Our clients have used Infosys Nia to leverage their organizational knowledge, generate deep insights and discover opportunities to optimize, simplify, and automate complex business processes.

About Advanced Machine Learning-

Infosys Nia Advanced Machine Learning (AML) increases data scientists' productivity by order of magnitude by applying automation to the data science workflow. It offers a broad range of machine learning algorithms with industry-leading speed and scale. Moreover, data analysts, developers and even business users with a limited knowledge of data science can also build high-performing ML models as a result of its easy-to-use ML workbench. Combine this with our strong capabilities in offering next-generation services, it has enabled our clients to significantly cut down turnaround time from data to insights leading to improved decision making. Targeted marketing, lower customer churn, reduced frauds in banking transactions or optimized asset efficiency —these are just a few of the ways Nia Advanced ML opens a new world of opportunities for businesses.

Installing the Limited-Edition Nia AI Platform – Machine Learning Package

Requirements

This section describes the hardware and software requirements for installing the limited edition Nia AI Platform – Machine Learning package distributed for participants of GovHack event.

Refer to the following for more specific information:

- [Hardware Requirements](#)
- [Software Requirements](#)
- [Supported Browsers](#)

Hardware Requirements

- 4 cores
- 8 GB RAM
- 20 GB usable disk space

Software Requirements

The following are assumed to be already available on your system:

- Docker version 1.13.1 or higher

Supported Browsers

The following table lists the browser/OS combinations that are supported in Infosys Nia Advanced ML. The supported browser version is assumed to be the current browser version.

Browser	OS
Google Chrome	Windows 7, Windows 8, Windows 10, Mac OS X
Mozilla Firefox	Windows 7, Windows 8, Windows 10, Mac OS X

Steps to launch the Limited Edition Nia AI platform – ML product

- 1. Download the limited version of Nia AI Platform – ML package.**
Read the Terms of use that govern your access and use of the product.
Read the FOSS-Readme.pdf to understand the licensing information about free, open source software (FOSS) bundled in the package.
Download the nia-ml-for-govhack-nia-aml-3.9.0.tar file.
Read the user manual for the product.
- 2. Install Docker Desktop.**
You can download and install from <https://www.docker.com/products/docker-desktop>.
- 2. Setting up the right resource levels**
Open Docker Desktop
Open the *Settings* page; and select the *Resources* section.
We recommend that you select 4 CPU cores and atleast 8 GB RAM.
Restart your docker desktop.
- 5. Running the limited version of Nia AI Platform – ML product**
Open a windows command prompt / windows powershell
Goto the directory containing the downloaded tar image

To load the docker image execute the command:

```
docker load --input nia-ml-for-govhack-nia-aml-3.9.0.tar
```

To run the docker image execute the command: Execute without any linebreaks

```
docker run -itd -p 8088:8088 -p 8080:8080 --privileged -v /proc:/writable_proc -v  
aml_pgsql_data_dir:/var/lib/pgsql/9.4/data:rw -v aml_app_data_dir:/user/skytree:rw -v  
aml_hadoop_log_dir:/opt/skytree/hadoop-2.7.1/logs:rw -v  
aml_yarn_app_log_dir:/tmp/logs:rw -v aml_zookeeper_log_dir:/opt/skytree/zookeeper-  
3.4.6/logs:rw -v aml_app_log_dir:/opt/skytree/platform/tomcat/logs:rw --name=nia-ml-  
for-govhack evdtr.ad.infosys.com/r3_restricted_area/nia_nlp_under_check:nia-ml-for-  
govhack
```

To launch the ML Workbench:

Launch your browser and goto URL <http://localhost:8080/>

- 6. Credentials**
User name: trial@infosys.com and password: *TryNia@123*
- 7. Happy machine learning**

We have loaded two demo projects for you.

Note: Default projects are available for below mentioned credentials

Username: trial@infosys.com

Password: TryNia@123